



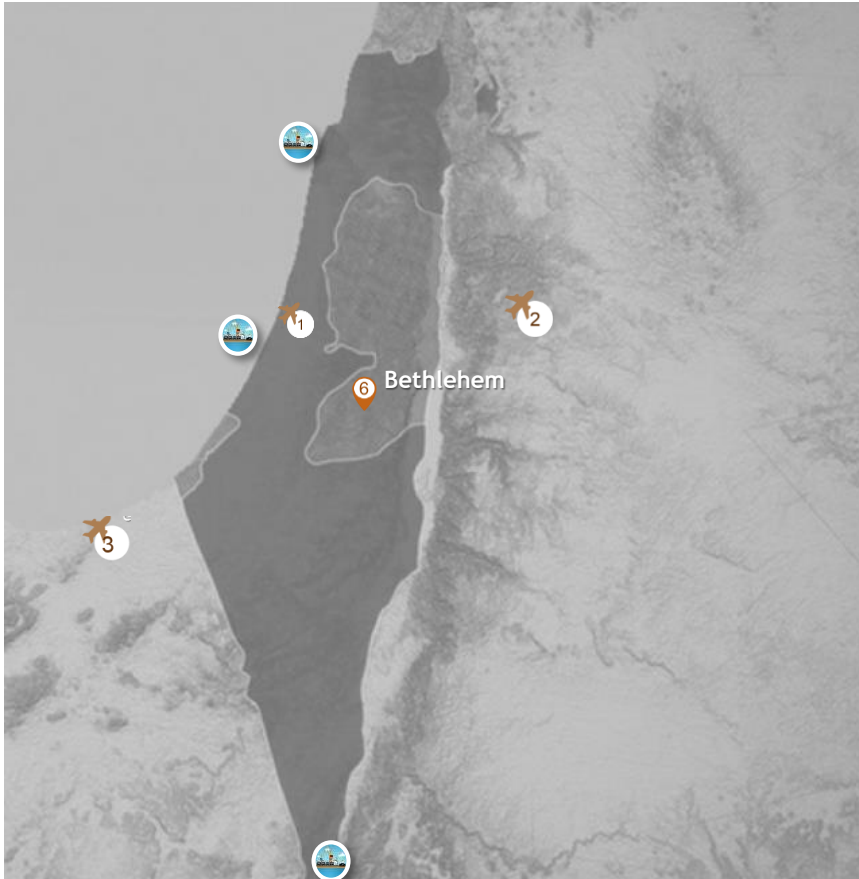
Bethlehem Multidisciplinary Industrial Park

شركة منطقة بيت لحم الصناعية المتعددة التخصصات

Bethlehem Industrial Estate

منطقة بيت لحم الصناعية

The Park - Location



The BIE is located at 3 km from the center of Bethlehem, 8 km from Jerusalem, 70 km from the Jordanian crossing point and 40 km from the sea port of Ashdod.

- Bethlehem vicinity.
- 20 Hectares.
- Open plots / Built up facilities.
- **Best international standards for proposed services to tenants.**

The Park

▶ Objectives:

- ▶ **Develop the economic activities, create jobs** and opportunities for Palestinians.
- ▶ Open the way to the next business and industrial parks in Palestine
- ▶ **Introduce a new dimension into economic cooperation** with France, Arab countries and others.
- ▶ **Introduce a dynamic image of Palestine** to the international economic community.

▶ Means:

- ▶ Develop the suitable hard / soft infrastructures for companies looking for local / regional markets.
- ▶ Provide the needed services to companies to support them in developing their businesses.

The contexte

- A joint commitment from Palestinian and French partners.
- Support of influential and proactive personalities.
- A gateway towards regional markets.
- Suitable infrastructure and utilities.
- A qualified list of potential tenants.
- Skilled and available workforce at reasonable cost.
- Worldwide iconic image of Bethlehem.



The company

The Bethlehem Multidisciplinary Industrial Park (BMIP) is French Palestinian « Public Private Partnership » the company have a concession agreement to develop, operate and manage the Bethlehem Industrial Estate granted by the government of Palestine represented by the Investment Promotion & Industrial Estate Agency (IPIEA):

The BMIP Ltd is a 50/50 French – Palestinian company, registered with a starting capital of 1.3 million Jordanian Dinars.

- **Palestinian partners (50%):**The Palestinian private sector is represented by Al Mutaadedda holding chaired by Mr. Sami Abu Dayyeh (40%) & FTF Investments chaired by Mr. Sami Abu Dayyeh (10%)
- **French partners (50%):**Deska, an Evens group company chaired by Mrs. Corinne Evens (42%), represents the French private sector & the Agence Française de Développement AFD (8%).

Master plan & strategy



➤ Comprehensive phases to propose to target-clients:

- Open lots (ready to build)
- “Plug and play” facilities

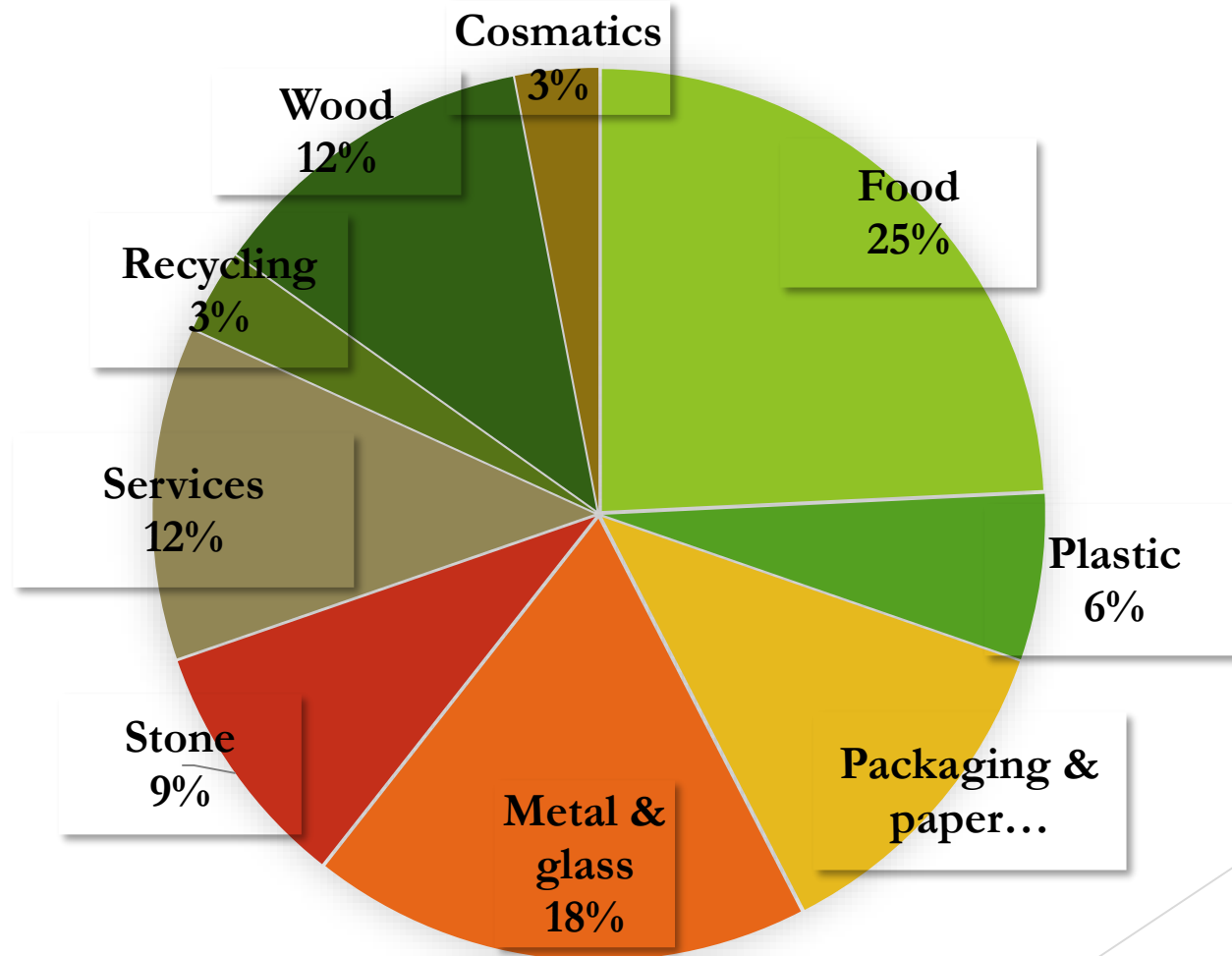
➤ Aggressive commercial strategy

- First class services
- Low renting fees

➤ Strong public support:

- Enhance success
- Share the risk (PPP)

Tenants / Factories by sector



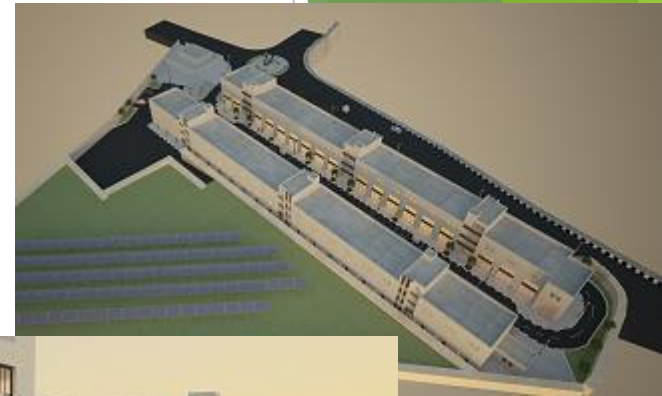
The BMIP strategy for the coming five years will be:

- Constructing an industrial building (s): Constructing an industrial building (s) for SME's; small business and supporting workshops for factories in BIE.
- This building will be located in the southern part of BIE, and will consist of two building each with an approximate area of 1,500 m² for each floor.
- Establishing a solar farm – Environmental activity: A solar farm, with a capacity of approximately one megawatt.
- Developing of Phase III: The development of this phase will be as empty lots for tenants or buildings contracted by BMIP for different usage.

Industrial Building

Goals and Objectives:

- Prepare suitable infrastructure for SMEs.
- Developing SMEs.
- Creating more than 300 jobs.
- Vertical development of BIE.
- Meet local demand for developing businesses and creating new ones.
- Promoting small industries and workshops.





Bethlehem Multidisciplinary Industrial Park
شركة منطقة بيت لحم الصناعية المتعددة التخصصات

► GIE video

Thank You

Bethlehem Multidisciplinary Industrial Park (BMIP)
Bethlehem, Palestine

Tel: +970 2 2730011 / +970 2 2730022

E- mail: bmip.bethlehem@gmail.com

WWW.bmipbethlehem.com